

## Surface Roughness Tester TIME3230 (TR300)



- 55 parameters that conform to ISO/DIN/ANSI/JIS standards
- Measurement of roughness, waviness and primary profile
- Display in  $\mu$ inch or  $\mu$ m
- Multiple measuring ranges for narrow or wide range applications
- Drive and display are integrated in a compact portable unit
- LCD, digital/graphic display
- Selectable skidded or skidless operation
- Advanced Windows software is optional
- Data output through RS232 or USB
- Optional mini printer is convenient for on - site printing

### Specifications:

Assessed profile	R(roughness), W(waviness), P(primary profile)
Measuring range	$\pm 400 \mu\text{m}$ , $\pm 40 \mu\text{m}$ , $\pm 4 \mu\text{m}$
Filtering	RC, PCRC, Gauss, D-P, ISO13565
Parameters	<p>Roughness: Ra, Rp, Rv, Rt, Rz, Rq, Rsk, Rku, Rc, RS, RSm, Rlo, RHSC, Rpc, Rmr(c), RzJIS, R3y, R3z</p> <p>Waviness: Wa, Wp, Wv, Wt, Wz, Wq, Wsk, Wku, Wc, WS, WSm, Wlo, WHSC, Wpc, Wmr(c), WzJIS</p> <p>Primary profile: Pa, Pp, Pv, Pt, Pz, Pq, Psk, Pku, Pc, PS, PSm, Plo, PHSC, Ppc, Pmr(c), PzJIS</p> <p>Rk: Rk, Rpk, Rvk, Mr1, Mr2</p>

Cutoff length	0.08 mm, 0.25 mm, 0.8 mm, 2.5 mm, 8 mm
Max. tracing length	40 mm
Analysis graphs	ADC, BAC
Evaluation length	1×L-5×L
Resolution	0.0001 μm/8 μm
Accuracy	±5%
Display	LCD
Memory	10 groups of primary data
Data output	RS232, USB
Power supply	Li battery /AC adapter
Dimensions	409×96×98 mm

### Standard accessories:

- Main unit with standard stylus
- Roughness standard / patch
- Screwdriver
- Power adapter 9 V/4 A
- Instruction manual
- NIST calibration certificate
- Carrying case

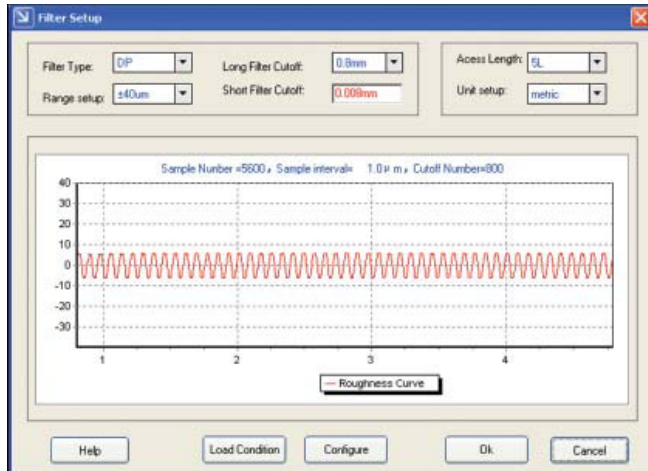
### Optional accessories:

- NIST calibration certificate for test plate
- Software & communication cable
- Stylus
- Mini printer
- Measuring platform

**LANDMARK**  
INDUSTRIAL, INC.

www.landmarkprecision.com  
Tel: (201) 788-6268  
Email: info@landmarkprecision.com

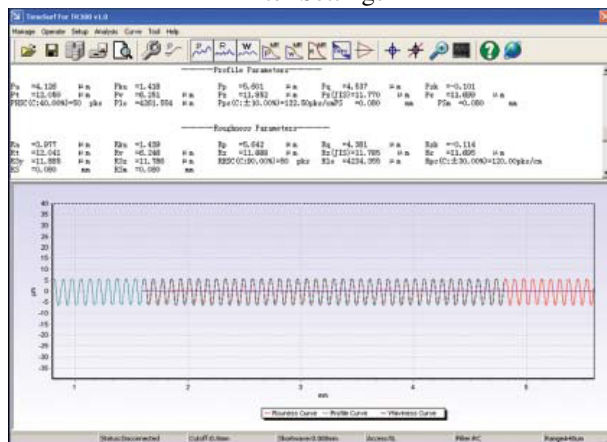
## Software screenshots:



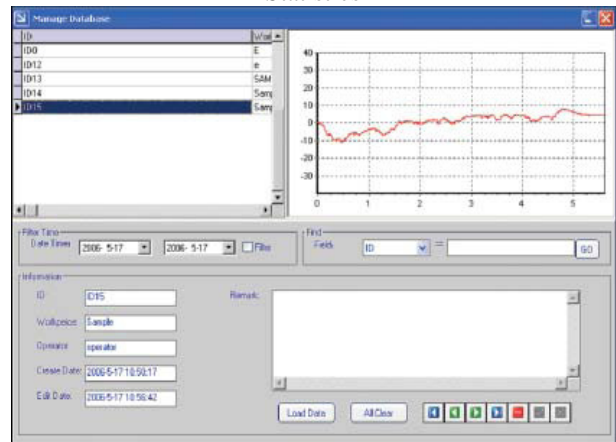
Filter Settings



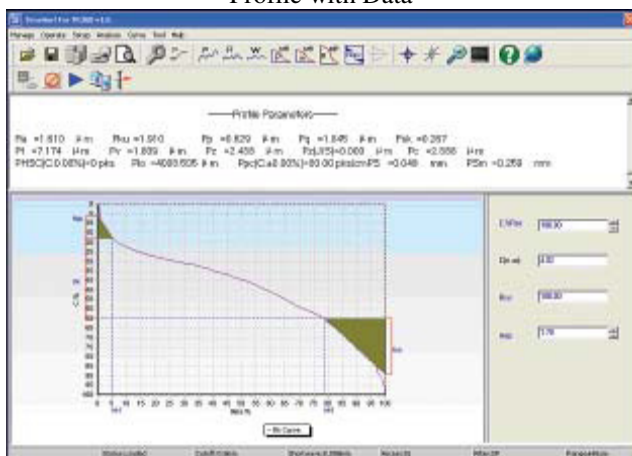
Statistics



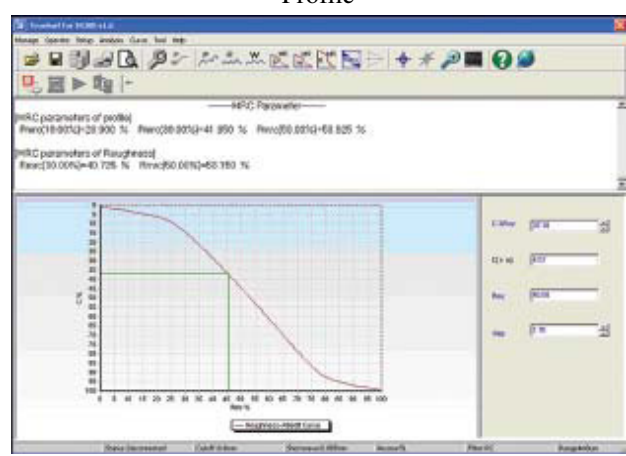
Profile with Data



Profile



Rk Curve



BAC

**LANDMARK**  
INDUSTRIAL, INC.

www.landmarkprecision.com  
Tel: (201) 788-6268  
Email: info@landmarkprecision.com